


**BODMIN
KEEP**
**CORNWALL'S
ARMY MUSEUM**

Easy Read Pre-Visit Guide



Front Entrance

This is the front of Bodmin Keep. Enter through the archway and follow the signs to enter the museum.



Rear Entrance

If you are arriving by car, you can use our carpark located at the rear of the building.



To enter the museum from the rear, take the stairs to the left when inside this tunnel. There is also signage to show you the way.



Toilets

There are three toilets available. If you go through the archway from the carpark the ladies can be found on the left.



The disabled and unisex toilets are to the right.



Our disabled toilet has a Bathroom Emergency Pull string. It is also where our baby changing facilities are located.



Museum Entrance

The museum is accessed via two flights of stairs. There are handrails on either side.



At the top of the stairs, you will reach the gift shop and welcome desk.



The Gift Shop

This is our gift shop where you can buy your ticket to enter the museum.



You will be greeted by one of our friendly volunteers, who will be happy to answer any questions you may have. This is also where you can ask to borrow a sensory bag, ear defenders or sunflower lanyard.



The First Gallery

The first gallery will take you through a timeline of the regiment's history. Go left as you enter the gallery.



Go through the doorway to enter the next gallery.





Follow the route round to the right to enter the First World War gallery.



Continue straight ahead through the shop to reach the Armoury.



The Armoury

This is the Armoury where most of the museum's medals and weapons are displayed.





Second Floor Access

To reach the second floor, go through the doorway in the Armoury and up the stairs.



This is the first room you will enter on the second floor. There will be different Army uniforms for you to try on.



The next room is smaller and has information about the Territorial Army.



Next is the cinema room. There is minimal lighting here and the film will play on repeat at a moderate volume with talking and music.



Through the doorway is a large piece of the Berlin Wall and a small screen displaying a slideshow.



The next door leads you to a corridor and straight ahead is the Sir John Moore Room. Lieutenant-General Sir John Moore introduced light infantry regiments.



Come out of the John Moore room and follow the corridor to enter the next room.



This room focuses on the British Army's involvement in Northern Ireland and The Middle East.



The next room is for temporary exhibitions. The photo shows the 'Suited & Booted' exhibition (2022)



Exit the gallery on the far side and follow the corridor to the History of the Barracks room.



This room continuously plays a video with a voiceover about the History of the Barracks.



Opposite the History of the Barracks room is another temporary exhibition space. Our 'School for Spies' activity room is shown in this photo (Summer 2022).



Outside Second-hand Bookshop and Coffee Stop

As you exit the main building turn left for the bookshop. Our second-hand bookshop has a wide range of books for all ages.



There is a step as you enter the second room with the coffee machine and seating.

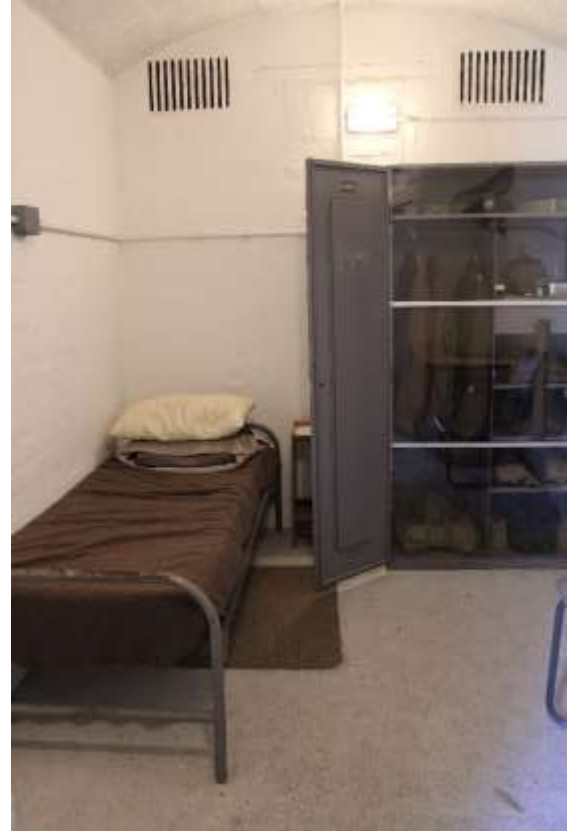


We have a coffee machine and chilled drinks to enjoy outside or in the bookshop. There is a donation box for cash purchases, and you can pay via card in the gift shop



The Regimental Cells

The cells are near the front entrance of the museum and are a small space. This is where soldiers were temporarily locked up in the past.



The Trench

The Trench is located at the rear of the building near the carpark. It is accessed via a wooden pathway.



Take care when walking on the wooden boards and climbing the ladder in wet weather as they can be slippery.

